

CLOSED CIRCUIT

Pick Up Truck Pictures and Cinema Plus are pleased to have this opportunity to present the film **Closed Circuit** to Australian audiences. From the producers of *Tinker Tailor Soldier Spy*, and director **John Crowley** (*Boy A, Is Anybody There?*) **Closed Circuit** is a gripping and thought provoking British thriller that explores conspiracy, terrorism and privacy in the modern age.



How the film came about: Tim Bevan and Eric Fellner of Working Title Films were drawn to this story after discussions with QC Tim Owen, who has a background in human rights and social justice cases, about the changes in the United Kingdom's criminal justice system since 9/11 in the U.S and 7/7 in the U.K.

One of the most significant changes to the U.K justice system in recent times has been the appointing of a Special Advocate to the defense when the prosecution intends to use classified evidence, usually relating to national security.

And so screenwriter Steve Knight began work on the original screenplay exploring a defendant's legal representation by a barrister and Special Advocate in a U.K terrorism trial.

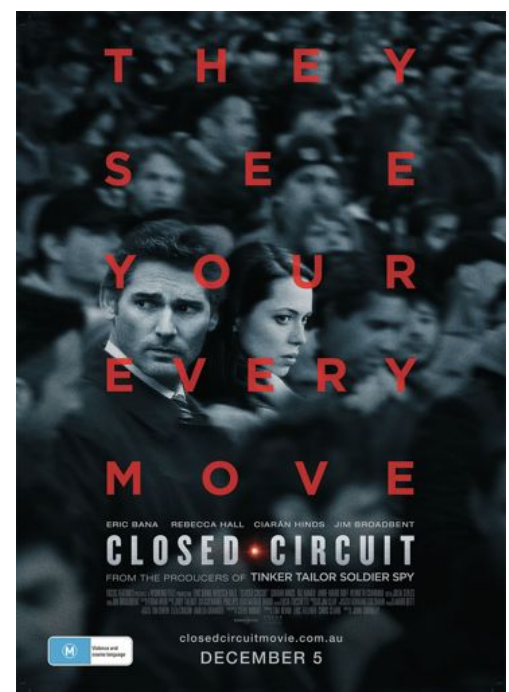
Special Advocate and U.K Justice System: A Special Advocate is a barrister appointed to represent the interests of a defendant in proceedings wherein at least part of the evidence is "classified material" that will only be presented in a "closed session". The SA is the only person on the defense team who has clearance to view the classified evidence and it is the SA's role to represent the defendant's interests in the "closed sessions".

After the SA has been given the classified material the SA cannot contact the defendant or the defense barrister, so as to prevent the SA revealing any classified information to the defendant, meaning that the individual being tried will never have all the evidence that is being used against him in front of him.

Terrorism cases are flashpoint examples where the prosecution is likely to harbour highly sensitive information, and require the appointment of an SA, as is the case in **Closed Circuit**.

Closed Circuit explores a high-profile terrorism case that unexpectedly binds together two ex-lovers **Martin Rose (Eric Bana)** and **Claudia Simmons-Howe (Rebecca Hall)** on the defense team, Martin as defense barrister and Claudia as Special Advocate for an accused terrorist.

Director **John Crowley** committed to directing this film not least because he felt that "there are a lot of people who feel very strongly that there are dangers to having closed court hearings, and that these fly in the face of due process. If you cannot have revealed, in open court, the evidence that someone has against you and have it tested, are you suspending something which is central to a fair legal system?"



Opens in Cinemas 5th December

www.closedcircuitmovie.com.au